



# Health Facility Planning

## Capability and Experience Statement

March, 2013

*Garry Coff Consulting Services*

RMB 88B Red Hill Rd, Scott Creek, SA 5153

Contact: **Garry Coff**

Telephone **(08) 8388 2019**

Facsimile **(08) 8388 2599**

Email: [garrycoff@hfps.com.au](mailto:garrycoff@hfps.com.au)

Website: [www.hfps.com.au](http://www.hfps.com.au)

## Introduction

Garry Coff Consulting Services commenced operation as a specialist Health Facility Planning and Interior Design practice on the 1st November, 1994. We are able to bring together appropriate personnel and resources to meet the needs of a broad range of clients, covering any scale of project.

The main focus of the practice is Health and Aged Care, and we offer extensive experience in the planning and design of cost effective facilities tailored to meet the needs of health service providers. We understand the need to ensure all projects are able to demonstrate a Best Business Case scenario and produce Option Analysis and Economic Evaluation justification for all proposals.

As Health Facility Planner we will drive the consultation and health facility planning components of the study and ensure a balance of functional elements is maintained within the facility design.

The experience Garry Coff has as 'client' in projects provides our team with a unique advantage over consultants who operate from a base of Architecture or architecturally focused Health Planning. We understand clearly the objectives of



the Hospital and the importance of full consultation to ensure important operational issues are not overlooked and glossed over as minor management issues.

This experience assists us to fully appreciate the need for flexibility required to manage change into the future and deal with the constant need to reduce costs in order to maintain services and improve quality.

We believe that the integration of Strategic Planning, Facilities Management, Architecture, Interior and Graphic Design and Landscape Architecture during the briefing and concept development stage of a project greatly assist the Client Group in achieving an understanding of the opportunities available as a result of the planning process.

Recent projects include proposals for the integration of small numbers of Commonwealth funded nursing home places within isolated health units throughout country South Australia to assist in maintaining viability of the health units and to provide access to nursing home facilities for small communities. This has involved the concurrent Master Planning of 33 facilities in order to meet program for the overall project implementation.

He has recently been involved in the planning of complex clinical facilities including:

- assisting Woodhead Architects in developing Master Plans for Royal Brisbane and Women's Hospital and Logan Hospital (991 beds) in Queensland and for the Goulburn Base Hospital in rural NSW.
- a number of design projects in Asia, working under contract to Vamed Healthcare Services:
  - Design Reviews of three major Hospital Projects in the city of Bangkok,

- A new 300 bed Super Specialty Islamic Hospital near Kuantan, Malaysia,
  - Concept Planning for a 1500 bed Public Hospital in the rural centre of Pizhou, South of Beijing,
  - Concept Design for a new 110 bed Private Hospital for the MCS Corporation in Ulan Bataar, Outer Mongolia.
- Being lead designer for a number of Operating Suite facilities in South Australia including proposals to relocate the Cardio-Thoracic Suite at Royal Adelaide Hospital and new theatres for the proposal to convert the Queen Victoria Hospital to a specialist orthopaedic surgical facility.
  - the development of several major CSSD suites, incorporating TSSU functions, and understands the crucial parameters of design to achieve an efficient, safe environment for these tasks
  - Birthing Suite and Delivery services at a number of health units including involvement in the planning of suites at the Women's and Children's Hospital in Adelaide and private facilities at the Gawler Health Service.
  - Concept Planning and Design for the redevelopment of a Medium Secure Mental Health Unit on the site of the Townsville Hospital to assist Queensland Health in the development of a new Service Model for the management of Medium Secure Mental Health Clients.
  - Facility Planning consultancy for the Design and Construction of the new Roxby Downs Hospital in remote outback South Australia – this project encompasses interesting concepts for small isolated Health Units covering a broad range of services.
  - Development of a sustainable Model of Service for the Emergency Department at the Caboolture Hospital, North of Brisbane, following the closure of the facility by Medical staff at the Hospital (2009). The project required consideration of the recruiting and training of staff, the establishment of links with other Tertiary facilities and facility planning design to address workflow issues at the Hospital.
  - Whilst conducting a review of the Siriraj Development in Bangkok, Garry was invited to address a meeting of the Healthcare Leader Development Association of Thailand (HealDAT.org) on the subject of 'The future of Health Facility Design', attended by leading medical specialists and Hospital owners and Executives currently leading the transition of Health Service Delivery across Thailand.



The following is a schedule of some of the projects in which key personnel of our team have taken a major role. In many cases the work has been carried out in the name of the firm or organisation where personnel were employed or contracted. Additional information regarding the projects or individuals extent of involvement will be provided on request.

## Recent Projects

### **Royal Brisbane & Women's Hospital, Brisbane, Queensland**

Royal Brisbane and Women's Hospital (RBWH) is a 1077-bed general, tertiary referral, teaching hospital located at Herston within the Northside Health Services District (NHSD), close to the Brisbane CBD.

Garry Coff Consulting Services, under contract to Woodhead Architects, provided Health Facility Planning support to undertake a review of the Clinical Services Plan and to develop a Facilities Master Plan.

The Hospital has a comprehensive range of specialties including medicine, surgery, orthopaedics, psychiatry, oncology, obstetrics, gynaecology, neonatal intensive care, and trauma services. It is one of the largest tertiary referral hospitals in Queensland providing approximately 11.5 percent of patient services to Queensland as well as serving patients from northern NSW. RBWH has a significant teaching and research role.

The objective was to generate a strategic view of the service requirements for the Hospital over the next 15 years, to identify the physical implications and establish a planning framework for their efficient and effective achievement and to prepare a response to the imminent relocation of The Children's Hospital from the RBWH site to the Mater Hospital site.

The planning process included a review of the relationship of the RBWH with Hospitals in the RBWH catchment area and extensive consultation with the current site occupants.

The Master Plan for RBWH includes a campus-wide zoning plan which recognises the benefits of the synergistic relationships between all tenants and occupants of the site and that will assist in guiding and protecting future investment by all parties.

The planning solution identified a significant catch-up expenditure program of approximately \$55 million and the requirement for a major capital project of approximately \$360 million of upgrade and expansion to meet the projected needs of the Hospital for the next 10–15 years.

**Referees:**

Mr. Kieran Keys  
Director, Administration Services  
Royal Brisbane & Women's Hospital.  
Tel (07) 3636 0668

### **Upgrade of the Townsville Medium Secure Mental Health Facility**

Concept Planning and Design for the redevelopment of a Medium Secure Mental Health Unit on the site of the Townsville Hospital to meet a new Service Model for Medium Secure Units prepared by Queensland Health.

The proposals include extensive modification of the existing buildings and an increase of around 50% to address a number of inadequacies in the original design of the facility. The upgrade is programmed for construction to commence in January 2010 with completion scheduled for early 2011.

**Referees:**

Dr. Terry Carter  
MHPWC Project Manager  
Project Services  
Tel 0419 716 811

## **Logan Hospital Master Plan, Logan, Queensland.**

Garry Coff, supporting Woodhead Architects, developed the Master Plan for redevelopment of the Hospital, incorporating an upgrade of the Hospital's Emergency Department as a first Stage of work in a multi Stage expansion of the Hospital from 35,000 m<sup>2</sup> to around 100,000 m<sup>2</sup> comprising increased inpatient accommodation from 352 to 991 beds by 2021.

The existing Hospital is mostly 2-storey and is unsuitable for vertical extension so the proposed solution involves a complete replacement of the Hospital on the existing 'on-grade' carpark at a total cost of \$ 1.5 billion and the earliest completion date of 2016.

**Referees:** Mr. Steven O'Connor Ph: 07 3299 8820  
 Chief Executive Officer  
 Logan and Beaudesert Hospitals  
 Metro South Health Service District

## **Goulburn Base Hospital, Goulburn, NSW**

Goulburn Base Hospital is a 102 bed General Hospital in Rural New South Wales serving the city of Goulburn and surrounding Districts with a catchment population of 35,000. The Hospital has had limited funding for facility upgrading over the last 10 years and it was recognised that many areas of the Hospital have become inefficient and potentially unsafe for continuing use and that significant redevelopment will be required over the next 10 years.

Garry Coff assisted Woodhead in the preparation of a Master Plan for development of the Hospital with a focus on increasing Ambulatory Care Services to meet the changing needs of the catchment community.

Considerable upgrade is required to Clinical Departments of the Hospital to shore up poor Departmental relationships that have developed over the past 10 years.

**Referees:** Kerry Hort  
 Integrated Services Manager  
 Goulburn Health Services  
 Tel. (02) 48273267 Mobile: 0428257072

## **Hardened & Networked Army Development (HNA) New Hospital at Edinburgh RAAF Base, Northern Suburbs of Adelaide**

Garry Coff Consulting Services has recently completed a contract to Woodhead Architects to provide Element Leader support for the Design Development and Contract Documentation of the new HNA Medical Facility at Edinburgh. The project comprises a new 22 bed Inpatient Hospital, Emergency Medical Response Unit, Outpatient Medical Clinic, Dental Suite (9 chairs) and Rehabilitation/Physiotherapy Unit. Additional functions catered for within the design include an Environmental Health Response Unit, Emergency Deployment Capability and Emergency Evacuation Unit. The project budget construction and fitout budget was \$24.7 M and the project was completed in early 2011.

**Referees:** Mr David Gilbert Tel. 0419 818 620  
 Woodhead Architects

Mr. David Tranthem Tel 0419 716 811  
 Defence Project Manager  
 Project Services

## Consultant Review of New Hospitals in Bangkok, Thailand

Garry Coff has recently carried out Design Reviews of three major Hospital Projects in the city of Bangkok, under contract to Vamed Healthcare Services. These projects have been conducted to assist the individual Hospitals in their bid to obtain International Accreditation for their facility and were carried out prior to the completion of construction of the facility. The projects include:

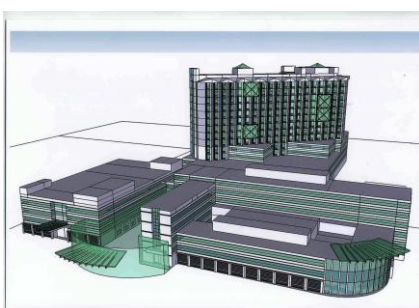
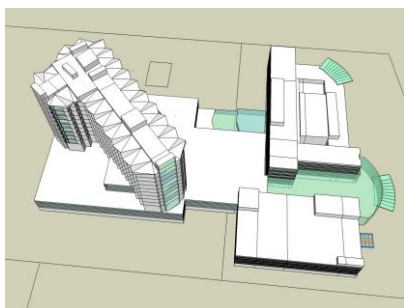
- Review of Ramathibodi New 300 bed stand alone Hospital addition, adjacent to the existing 2000 bed University Hospital, driven by the intention to attract and service Asian clients currently travelling to the USA for surgical procedures.
- Review of Siriraj Piyamaharajkarun Hospital New 300 bed expansion of the existing University Hospital with a focus on attracting VIP clients and providing high quality care in conjunction with the adjacent 1500+ bed Mahidol University public Hospital.
- Review of Queen Sirikit National Institute for Children's Health (QSNICH) Development of proposals for occupancy of a new building and the preparation of a High Level Master Plan for growth of Services and increasing activity for the next 10 years to 2021.



**Referees:** Prof. Apichat Sivayathorn Tel. +66 087 0946248  
Healthcare Leader Development Association of Thailand  
(HealDat Organisation)  
Bangkok, Thailand

## Peoples Hospital of Pizhou, China.

Garry Coff Consulting Services is contracted to VAMED Healthcare Ltd in Beijing, China to provide Health Facility Planning advice and support and has recently completed the preparation of Schedules of Accommodation and Concept Planning for a 1500 bed Public Hospital in the rural centre of Pizhou, South of Beijing. The new Hospital will be constructed on the site of an existing Medical Centre that includes Radiotherapy Services and some consulting services.



The design includes a First Stage of Construction comprising 600 beds with 16 Operating Theatres and support infrastructure.

**Referees:** Miltos Denediotis  
Head of Design & Engineering  
Vamed Healthcare Services, Beijing, China  
Tel. +86 139 1029 0357

## **International Islamic University Malaysia (Medical Centre) Hospital, Kuantan, Pahang Darul Makmur, Malaysia.**

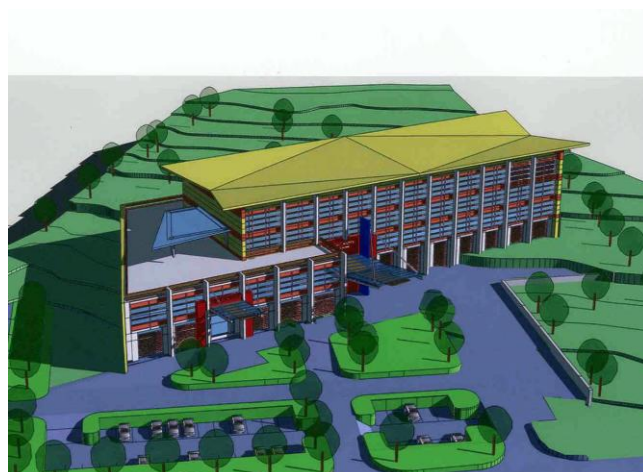
Garry Coff Consulting Services provided consulting Support in the Vamed Engineering (Malaysia) team bid for a new 300 bed Super Specialty Hospital near Kuantan. Garry prepared detailed accommodation schedules of accommodation for all areas of the new facility which was required to incorporate potential for expansion to 1200 beds. Initially the Hospital will comprise 12 Operating Theatres for inpatient care and 6 Day Surgery Operating Rooms plus 6 Endoscopy Investigation Rooms. The total floor area of the initial stage is scheduled at 104,000 square metres.

## **MCS Private Hospital, Ulan Bataar, Outer Mongolia.**

Garry Coff assisted VAMED Healthcare Services (China) Ltd in the preparation of Schedules of Accommodation and the Concept Design for a new 110 bed Private Hospital for the MCS Corporation in Ulan Bataar.

The new Hospital will include accommodation for visiting specialists and full Surgical Capability to support a range of high level specialties including Cardio-Thoracic Surgery.

Construction was expected to commence mid 2008 with completion in late 2009.



### **Referees:**

Miltos Denediotis  
Head of Design & Engineering  
Vamed Healthcare Services, Beijing, China  
Tel. +86 139 1029 0357

## **Flinders Medical Centre, South Australia**

### **Operating Theatre Suite Upgrade**

Garry Coff Consulting Services and Lapsys Keam Architects were jointly commissioned in June, 1997 to review the Feasibility Report and prepare a Project Definition Report for proposals to upgrade the Operating Theatre Suite at Flinders Medical Centre (FMC) for submission to the South Australian Health Commission to obtain funding approval for the project.

In re-planning the Operating Theatre layout, the existing available area has been maximized to provide larger theatres to meet current, and future, needs. The preferred option identifies the need for 8 Operating Theatres.

- 2 theatres at 64 m<sup>2</sup>, Cardiac with a dedicated perfusion room between the two theatres.
- 1 theatre at 69 m<sup>2</sup>, Orthopaedic surgery and as a key component of the 'Multi-organ Transplant Centre' outlined within the FMC Strategic Plan.
- 5 theatres at 55 m<sup>2</sup>, suitable for use by all disciplines. One theatre has been allocated as an Emergency Theatre and will include plumbing and monitoring for Cardiac Surgery.

A fundamental consideration in the re-planning was for improved sterile zone management. The theatres have been re-oriented with a central sterile set-up area between the theatres which is accessed by a clean hoist from the relocated TSSU directly above this area on Level 4. The Project Definition Report was completed in July 1998, and recommended that the FMC Critical Care Unit required upgrading to create the space needed to accommodate the

Theatre Support Areas on Level 3. The estimated cost of the project was \$ 7,315,000.00'

### **CSSD Upgrade Project**

Garry Coff Consulting Services was commissioned in mid 2005 to develop design solutions for the upgrade and refurbishment of the CSSD to accommodate the bulk of the TSSU instrument sterilizing.

The solution required work to be carried out with minimal disruption to workflow so that Operating Schedules could be maintained.

### **Dialysis Suite Upgrade**

Garry Coff was commissioned to develop Concept Plans and Functional Briefing Documents for the upgrade of The Level 5 Suite and to allow increased accommodation of 3 additional Chairs/beds and improved isolation capability within the Suite. The project was completed in July 2006.

### **Accident & Emergency Redevelopment**

Whilst employed as Health Facilities Planner for the South Australian Health Commission Garry prepared the Functional Design Brief and Project Definition Report for the upgrade of the Accident and Emergency Department at Flinders Medical Centre.

The project required the preparation of detailed staging plans to enable the hospital to continue to offer services during the construction process. The project has recently been completed at a total cost of approximately \$ 5 million.

### **Level 2 review**

Review of accommodation on Level 2 and planning for future upgrade of areas including Nuclear Medicine, Ultrasound, Pharmacy, Pathology Suite, Social Work and Podiatry.

### **SouthPath Projects**

Garry has been involved in a number of small planning studies to improve workflow and increase efficiency and safety in the facility operation at SouthPath including:

- **Redevelopment of the Blood Transfusion Laboratory** on Level 3, to install certifiable Cold Room/Freezer Storage increase area by absorbing an adjacent corridor and to improve laboratory workflow. The laboratory functions 24 hours/7 days and work had to be scheduled to allow minimal disruption to services.
- **Anatomical Pathology Laboratory, L4**  
Garry has developed a three stage redevelopment plan for the Level 4 Anatomical Pathology Laboratories to overcome a number of workplace safety concerns and to provide a more efficient workflow. The project is waiting on funding.
- **Mortuary Upgrade**  
Garry Coff was commissioned to upgrade the outdated Mortuary Area on Level 4 and to create an indoor area for the filling of Liquid Nitrogen containers and minus 80<sup>0</sup> C freezers storing tissue and slide samples for the laboratories and the University. The conversion of spaces allowed the creation of one compliant Mortuary Table with support infrastructure and was completed in March 2006.

### **Referees:**

Mr. Robert Crossman Tel (08) 8204 5240  
Acting Director, Environmental Services  
Flinders Medical Centre.



## Murray Bridge Hospital Redevelopment

Garry Coff Consulting Services was commissioned in July, 1995 to prepare a Condition of Asset Statement and Facility Master Plan for the Murray Bridge Soldier's Memorial Hospital. His involvement with the developing Hospital included a number of small extensions and refurbishments to improve efficiency and safety in the operation of the Facility.

Garry was further commissioned as part of the Design team headed by Matthews Architects, working in association to provide Health Facility Planning support to the project during Design and Documentation phases of the project. The Hospital redevelopment was finally commenced in mid 2004 and was completed in early 2007 at a cost of approximately \$ 11 million.

The Hospital was reduced to 44 beds and the project included upgraded Accident & Emergency facilities, Medical Imaging facilities, Community & Allied Health accommodation and associated support areas.

### Referees

Mr. Rick Brandon  
Chief Executive Officer,  
Murray Bridge Soldier's Memorial Hospital Inc  
Tel. 0419 829 968.

Mr. Rod Moyle, SA Department of Health  
Tel (08) 8226 6636

## GP Plus and Medical Centre Projects

### GP PLUS Healthcare Centre Gilles Plains SA

Garry has recently assisted Greenway Architects as Health Facility Planner on the team selected to develop design solutions for the new GP Plus Centre at Gilles Plains.

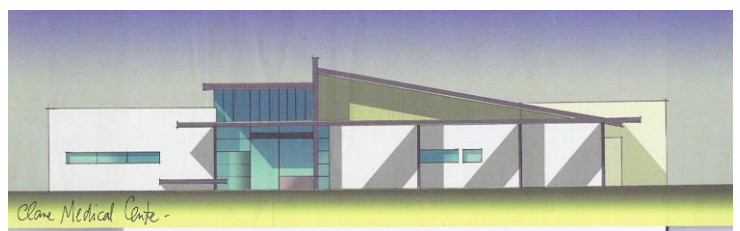
The project is designed to provide shared accommodation for the Gilles Plains Central Northern Area Health Service Community Health services team and the Aboriginal Outreach Health Service operating within the area and includes 1,300 m<sup>2</sup> of new building.



### Clare Medical Centre – Clare, SA

Garry Coff Consulting Services was jointly commissioned with Rich Architects by the privately operated Clare Medical Practice, to design and document new practice accommodation in the main shopping Centre in Clare.

The new building provided approx. 1000 m<sup>2</sup> of net area and included 14 consulting rooms, treatment area for minor procedures, pathology lab., Medical Imaging facilities and pharmacy dispensary.

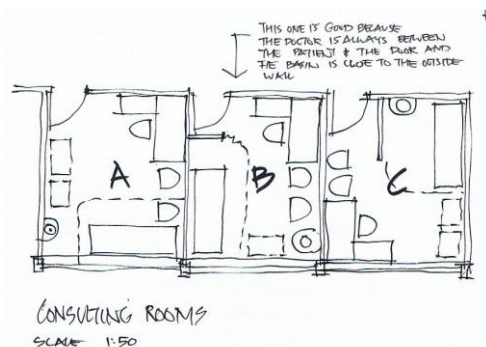


## Bedford Medical Centre – South Road, Bedford Park SA

Garry Coff was commissioned as Health Facility Planner on the team headed by Hodgkison Architects to carry out an urgent conversion of vacated office accommodation at the front of the Mitsubishi manufacturing plant on South Road at Bedford Park to accommodate Bedford Medical Clinic.

The facility provided approx. 650 m<sup>2</sup> net. floor area accommodating included 9 Consulting rooms, 3 specialist mole assessment examination rooms, specialist testing and Photo Dynamic Treatment areas and two minor Operating Theatre/Treatment rooms.

The project was completed October 2009 and most elements of the practice could occupy the new premises within 8 weeks of commencing design.



## Aboriginal Health and Aged Care

We have been involved in a number of projects requiring an awareness and understanding of Aboriginal cultural and tribal concerns and understand the need for clear communication processes and active participation from the communities working and living in the area. Garry's recent involvement with a number of Indigenous Design Projects across South Australia and Victoria is evidence of his ability to establish and maintain communications with diverse and difficult client groups to achieve a successful outcome:

### Swan Hill Aboriginal Health Services

Garry Coff Consulting Services provided Health Facility Planning support to a team led by Mildura based, Jayne Sunbird Enterprises to develop concept plans for the conversion of vacant Department of Transport buildings to accommodate the Swan Hill Aboriginal Health Services.

**Referee** Ms. Jayne Sunbird  
Jayne Sunbird Enterprises  
PO Box 568, Mildura Vic 3502

Telephone: +61 3 5023 3595  
Facsimile: +61 3 5023 3597  
Mobile: 0407 048 872

### Nunkuwarrin Yunti Aboriginal Health Service

Garry Coff Consulting Services was appointed in conjunction with Greenway Architects to prepare a Feasibility Study for the upgrade of existing accommodation in Wakefield Street, Adelaide. The planning process involved extensive consultation and negotiation with service providers to determine a Service Delivery Plan and Facility Design Brief that will meet the projected needs of the existing Medical Clinics, Allied Health Services, Welfare Initiatives and Aboriginal Sobriety Group (ASG).

The planning process was completed in March, 2008 with the preferred Concept Plan requiring upgrading and expansion of the building at an estimated cost of \$ 4.3 million.

**Referee** Mr. Phil Jennings  
Arup Project Management  
L2, Optus Centre, 431-439 King William St, Adelaide, SA

Telephone: 8413 6515  
Facsimile: 8212 6500

Garry was called upon in late 2010, to assist the Health Service in the preparation of Design Concept Plans and operational details in the organisations bid for Government funding for part of the above project.

**Referee** Mr. Michael McCabe  
Nunkuwarrin Yunti of South Australia Inc.  
182-190 Wakefield St, Adelaide, SA

Telephone: 82235217  
Facsimile: 8232 0949

## Umoona Aged Care Aboriginal Corporation, Coober Pedy, SA

Garry Coff Consulting Services was commissioned to conduct a study to develop Concept Plans and Project Definition for the development of high level aged care accommodation for Aboriginal residents of the local community. Following consultation with representatives of the local Aboriginal community and representatives of the more remote Anangu Pitjantjatjara Lands it was determined that the only viable solution for the scale of operation proposed was to collocate services on the Hospital site.

The project included conversion of a section of the Hospital acute ward to provide High level Aged Care support (7 beds) and included the addition of a separate building linked to the Hospital to accommodate the Hostel and Day Centre components of the service and the Administration and support team offices of the Umoona Aged Care Aboriginal Corporation.

The planning process required extensive consultation with The Commonwealth Department of Health and Aged Care, The SA department of Health, Local Community Groups and the Aboriginal Community to agree a model of service that would meet the requirements of all stakeholders. The project was completed in 2003 - Garry provided Health Planning support as part of the team led by Hodgkison Architects who were appointed to carry the project through construction.

**Referee** Ms. Kae Martin  
Director, Acute Care and Clinical Services  
Central Northern Adelaide Health Services

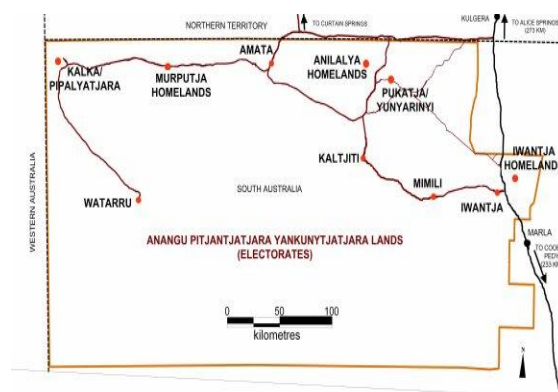
Telephone: 8222 1412  
Facsimile: 8222 1402

**Referee** Mrs. Gwen Crombie  
Manager, Umoona Aged Care Service

Telephone: 0417 814 674  
Facsimile: 86 725 775

## Condition of Asset and Functional Adequacy of Aboriginal Health Services Review

The South Australian Aboriginal Health Services in conjunction with the South Australian Department of Human Services and the Commonwealth Department for Health and Family Services commissioned a team in 1999 which included Garry Coff Consulting Services as Health Planner to conduct a review of Aboriginal Health Facilities throughout South Australia and to prepare recommendations for development of the sites to meet acceptable condition and functional standards.



The study involved physical inspection of all premises associated with Health Service delivery and staff accommodation across South Australia and included extensive discussion with

users to determine fitness for purpose and potential for upgrade to meet acceptable standards. The study was completed in June 1999 and recommended expenditure of approximately \$ 8 million to meet the projected need.

**Referee** Mr. Don MacDougall Telephone: 8226 6136  
Manager, Asset Planning Facsimile: 8226 6023  
Department of Human Services, Asset Services  
Level 7, CitiCentre, 11 Hindmarsh Square, ADELAIDE SA 5000

## **Ceduna Hospital Inc. Redevelopment**

Garry Coff, whilst employed by Woods Bagot as Principal Health Planner carried out the preparation of briefing and Master Planning for the upgrading of facilities to meet the requirements of the hospital in its new role as a Multi-Purpose Service Health Centre. A major element of the planning process was the introduction of culturally appropriate facilities to meet the needs of both the European and Aboriginal sections of the Hospital Catchment Community.

The design included a number of elements that would allow flexible accommodation able to meet the needs of both tribal and urban Aboriginal clients and provide safe areas outside the building for patients recovering and their family.

Following the establishment of his own practice in November, 1994 Garry continued on with this project to carry out design development and contract documentation. The developed design solution involved the refurbishment of previously under-utilized staff accommodation buildings as Nursing Home accommodation and reconfiguration of the existing Hospital Inpatient unit to improve efficiency and reduce operating costs. The facility was occupied in June 1997 with final costs of approximately \$1.65 million.

## **Wiltja Program and Anangu Education Services - Hostel and Administration Accommodation.**

The project involved the preparation of a detailed brief of requirements for the occupants and the development of concept plans, within strictly limited budget parameters, for the upgrading of vacant buildings on the Morris Hospital Site at Hampstead, in the North-Eastern suburbs of Adelaide, to meet the needs indicated. Garry Coff consulted with the client group to determine a brief for the organisation, prepared design solutions and assisted the Architectural team to ensure that all operational and functional requirements were incorporated into the finished facility.

The recycling of these poorly utilized, but sound, buildings as hostel accommodation for High School age Aboriginal children from remote South Australia involved careful management of spaces and areas to address many issues of culture and behaviour management. The project involved extensive consultation with tribal representatives from the Anangu Pitjantjatjara Lands and the Department of Education & Children's Services and was completed in mid 1997 at a cost of approximately \$ 1.6 million.

**Referee:** Mr. Rudi Victora Telephone: 8226 1703  
Manager, Asset Planning Facsimile: 8226 1583  
Department of Human Services, Asset Services

## Roxby Downs Hospital

Garry Coff Consulting Services was commissioned in July, 1997, as part of the Design and Construction Management team headed by Coombs and Barei Constructions Pty Ltd, to provide support to Architects, Greenway International. The new Hospital was completed in June, 1998 at a cost of around \$4.5 million, below budget and ahead of schedule. Garry provided Health Facility Planning for the project during Design, Documentation, Construction and commissioning phases of the project.

The Hospital is able to accommodate up to 16 inpatients (within shared rooms) and includes full Operating Theatre capability, Accident & Emergency facilities, Birthing Suite, Radiology facilities, dental suite, Ambulance Service, Community & Allied Health accommodation and associated support areas.



### Referees

Mr. Rod Moyle, SA Health Commission Tel (08) 8226 6636

Mr. John Barei, Coombs & Barei Constructions Pty Ltd.  
Tel (08) 8410 0177

## Eyre Regional Health Service Master Planning Consultancy.

Garry Coff Consulting Services was commissioned in February 2003 to conduct a review of Health and Aged Care facilities throughout the Region and to report on suitability for use, building condition and potential for future site and building development. The consultancy initially covered Ceduna District Health Services, Eastern Eyre Health & Aged Care Services (Cleve, Cowell & Kimba), and Mid West Health (Wudinna, Streaky Bay & Elliston) and was extended in 2004 to include Lower Eyre Health Services (Tumby Bay & Cummins).

The consultancy included broad brush Master Planning Concepts for each facility to enable short term upgrading of substandard and high risk areas of operation and to develop potential use for under-utilized areas of each facility within the context of a longer term strategic planning framework.

Concepts ranged from relatively minor alterations to Streaky Bay Hospital, to extensive re-development of the facilities at Ceduna and included analysis of region wide service initiatives that would improve quality control for linen handling, sterilization of instruments and Stores management and better utilize existing building stock throughout the Region.

**Referee** Mr. Stephen Ramsdall

Telephone: 86 820 915

Manager, Planning & Service Development Facsimile: 86 825 590

Eyre Regional Health Service

## Corporate Fact Sheet

Registered Business Name	Garry Coff Consulting Services
Services Provided	Health Facility Planning & Interior Design
Address	47 Red Hill Road, SCOTT CREEK SA 5153
Telephone	(08) 8388 2019
Facsimile	(08) 8388 2599
Mobile	0419 800 830
Email	garrycoff@hfps.com.au
Website	www.hfps.com.au

## Practice Description

The practice is a multi-disciplinary design practice operating from its own premises at Scott Creek in the Adelaide Hills.

We offer extensive experience across a broad range of projects and roles. Analytical skills, creative design, simple and effective communication, technical excellence, sound organizational and co-ordination ability and efficient administrative systems are hallmarks of the practice.

We have recent experience covering a wide range of project types including:

Hospitals	Community Facilities	Retail
Aged Care	Banks	Schools
Residential	Offices Interiors	Refurbishments
Industrial	Maintenance Audits	

We are able to apply the essential design principles to any project and create a technically sound, functional planning solution as well as an attractive environment, appropriate to the needs of particular users. We pride ourselves on our realistic approach to design and documentation, ensuring that time and budget constraints are met, providing value for money without compromise to the built form.

The practice has a broad Client base that includes the following organizations:

- South Australian Department of Health
- South Australian Mental Health Service
- South Australian Department of Education & Children's Services
- Women's and Children's Hospital
- Flinders Medical Centre
- South Australian Community Housing Authority (SACHA)
- Woodhead Architects
- Lapsys Keam Architects
- Hodgkison Architects
- Greenway International Architects

- Independent Living Centre
- Ceduna Hospital Incorporated
- Alzheimer's Association
- Disability Services Office
- Koonibba Aboriginal Community Health Service
- Family and Community Services
- S A Cervix Screening Program
- Levi Strauss (Australia) Pty Ltd
- Hills Mallee Southern Regional Health Service
- Wakefield Regional Health Service
- Bedford Medical Clinic
- Cora Barclay Centre
- Nunquwarrin Yunti of SA Inc.
- Vamed Healthcare Services (Thailand) Ltd.
- Red Shield Housing Association, Berri
- Mid Murray Homes for the Aged
- South Coast District Hospital

Projects undertaken have ranged from a few thousand dollars in value to \$1.6 billion and include new building as well as alterations, additions and refurbishment of existing facilities.

## Insurance

Garry Coff Consulting Services holds the following insurance coverage applicable to the provision of consultancy services:

### Professional Indemnity Insurance

Insurer: QBE Insurance Australia Pty Limited  
 Cover: \$A 3 million (any one claim/\$A 6 million aggregate)  
 Renewal: 31st October, 2013.

Should we be invited to participate in project work requiring increased levels of Professional Indemnity Insurance cover we will increase the policy to \$ 5 million.

### Public Liability Insurance

Insurer: Vero Insurance Limited  
 Cover: \$A 5 million  
 Renewal: 15th September, 2013.

## CURRICULUM VITAE

GARRY A. COFF CFM

Proprietor

*Garry Coff Consulting Services*



Garry has an extensive background in the health industry gained from a variety of roles within a broad range of health projects. He had wide-ranging experience in architectural and interior design projects before specializing in the health-care field.

His recent experience includes three and a half years as the Health Facility Planner for the SA Health Commission, followed by two years as Principal Health Planner with Woods Bagot where he was involved in an extensive range of projects prior to opening the practice in November, 1994.

Since commencing the practice Garry has continued to specialize in health facility design and concentrates on providing planning and design services to National and International health and aged care service providers.

### Experience

During the period 1973 to 1984 Garry gained experience in a wide range of architectural and interior design projects, including industrial, commercial and institutional buildings. During this period he was involved in all aspects of documentation and administration of projects in South Australia, Northern Territory, Victoria and New South Wales.

In August 1984 Garry joined the Lyell McEwin Health Service in South Australia as Building Project Officer for the first and second stages of the four-stage reconstruction of the facility. The opportunity to work closely within the hospital management structure provided valuable experience and an understanding of the operational aspects of a major metropolitan health service.

He joined Woods Bagot in July 1987 as Health Facilities Designer, working as part of a specialist team established to provide health-planning services nationally, to both public and private hospital clients. During this period he contributed to the development of the health design capability of the Woods Bagot Group and was involved in high profile facility planning and design.

He left Woods Bagot in June 1989 to take up a contract with the South Australian Health Commission as the sole Health Facilities Planner for South Australia. This position provided Garry with a unique opportunity to be involved with the operational planning and design of a broad range of health facilities, including master planning and project planning for major teaching hospitals, regional health centres and small metropolitan and country health facilities. **The emphasis has focused squarely on attaining efficiency and value for money without reducing levels of accommodation or patient care.**

He represented South Australia on the National Committee for Rationalized Building (NCRB), Health Sub Committee and through this forum has been able to participate in the



establishment of current standards and health design directions. Garry rejoined Woods Bagot in November 1992 as Principal Health Planner.

Major projects on which Garry has been involved include a client role during the amalgamation of the Queen Victoria Maternity Hospital with the Adelaide Children's Hospital, preparation of Master Planning concepts for the Royal Brisbane & Women's Hospital, Royal Adelaide Hospital and The Queen Elizabeth Hospital and the closure of the Hillcrest Psychiatric Hospital and consequent devolution of mental health services into the community.

Garry has conducted Concept Planning for a 1500 bed Public Hospital at PIZHOU South of Beijing and a 110 bed Private Hospital in Ulan Bataar, the capital of Outer Mongolia. He was retained by VAMED Healthcare, Beijing Office, to assist with Design and Planning for Hospitals throughout the Region and working under contract to Vamed Healthcare Services, Malaysia, completed a number of contracts in Asia, comprising:

- Design Reviews of three major Hospital Projects in the city of Bangkok,
- A new 300 bed Super Specialty Islamic Hospital near Kuantan, Malaysia.

Projects in which Garry has taken a major role cover a broad spectrum of the industry ranging from Master Planning for hospitals as remote as Ceduna and Roxby Downs, in outback South Australia, the design for office fitouts for the Women's & Children's Hospital in North Adelaide and planning and design of Acute Mental Health Inpatient Units and community based support accommodation within Metropolitan Adelaide.

He has extensive experience in remote area Health Facility Design and has been involved in an assessment of Health Facilities across South Australia to determine functional adequacy and fitness for purpose as well as being involved in a number of special service Aged Care Facilities at Coober Pedy and Ceduna. Recent Health Facility Planning experience has included the planning of complex clinical facilities including:

- Assisting Woodhead with a number of projects in NSW including:
  - The preparation of a combined SPP/PDP for Stage 1 works at Hornsby Ku-ring-gai Hospital.
  - the development of a standardized Approach for the conversion of small rural Hospitals to become Multi Purpose Services, offering combined Acute Care and Commonwealth standard Aged Care Accommodation to small numbers of local residents,
  - Preparation of a Master Plan for redevelopment of the Goulburn Hospital.
- Garry recently assisted Woodhead International in the Master Planning and Schematic Design Phase of Redevelopment Proposals for the Logan Hospital, South of Brisbane. The project requires solutions to address growth in Services and Activity of almost 200% by 2021/2022 with works budgeted at approx. \$1.6 billion and completion expected in 2016.
- Development of a sustainable Model of Service for the Emergency Department at the Caboolture Hospital, North of Brisbane, following the closure of the facility by Medical staff at the Hospital. The project required consideration of the recruiting and training of staff, the establishment of links with other Tertiary facilities and facility planning design to address workflow issues at the Hospital.
- Assisting Woodhead International in the development of a Master Plan for the current and future needs of the Royal Brisbane and Women's Hospital (RBWH) responding to the imminent relocation of The Children's Hospital from the RBWH site to the Mater Hospital site in Brisbane. The planning process included a review of the relationship of the RBWH with Hospitals in the catchment area of RBWH and approximately \$800 million of upgrade and expansion to meet the projected needs of the Hospital for the next 10 – 15 years.

- He recently contracted to Woodhead Architects as Project Leader on Design and Documentation of the new Hospital and Medical Centre for the Australian Defence Forces 'Hardened and Networked Army' development at Edinburgh North of Adelaide. The project comprises specialist evacuation, environmental assessment, retrieval and Hospital operations including Emergency and extensive Dental facilities.

The broad based experience Garry has within the health industry has led him to appreciate the role of the consultant and the importance of being able to offer a truly comprehensive service; covering pre-design consultation on regional master planning, initial studies to determine budget parameters, accurate briefing, detailed building design, selection of materials, detailing and construction methods with durability and low maintenance in mind, post-occupancy evaluations and life-cycle cost analyses.

The integration of strategic planning, facilities management, architecture, interior and graphic design and landscape architecture during the briefing and concept development stage of a project greatly assist the client group in achieving an understanding of the opportunities available as a result of the planning process.

Garry is a strong supporter of the consultation process, believing that a good result is assured if open communication practices are maintained and issues are confronted and resolved as a project evolves.

**Qualifications:**

Architectural Drafting Certificate, Granville Technical College, New South Wales (1976).  
Associate Diploma in Building Studies/Architectural, S.A. Institute of Technology (1984).  
CFM Accreditation, International Facility Management Association (IFMA (since 2009)).

**Affiliations:**

Member, Institute of Drafting and Design Australia  
Member, Graduates Association, University of South Australia  
Professional Member, Facilities Management Association of Australia (FMA)

**Personal:**

Garry was born in Broken Hill, New South Wales in 1954. He is an Australian citizen.